

Light efficiency:

58 Lumen/Watt

Light quality:

CRI: 95.7

Color temperature:

5791 K

Output: 18622 lm

Peak: 322878 cd

Power: 321.2 W

PF: 0.99



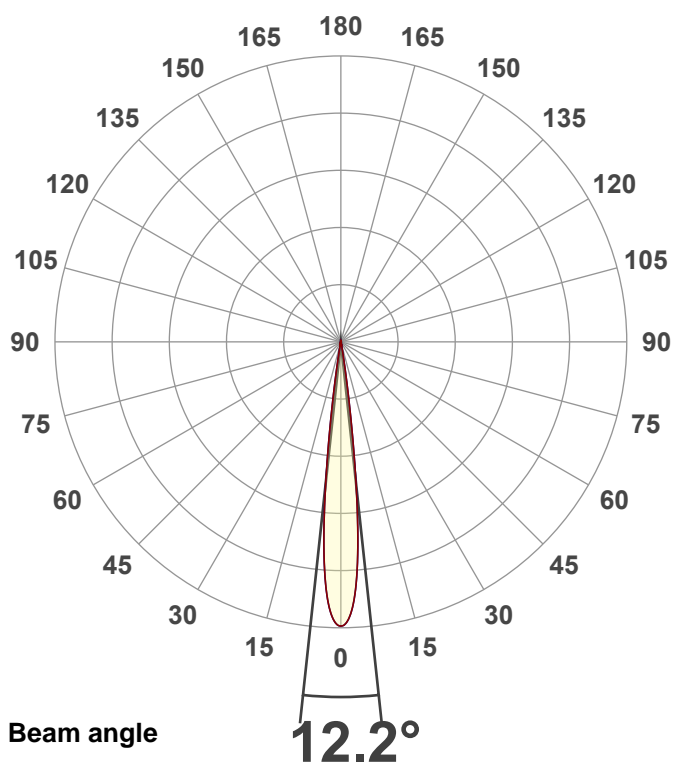
Product name:

PAR Z300 6K (Zoom 15°, Full On)

Item number:

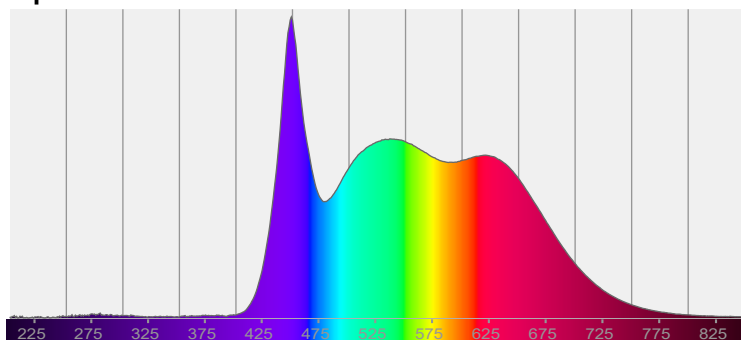
Date and time:

8/18/2025 9:38:54 AM

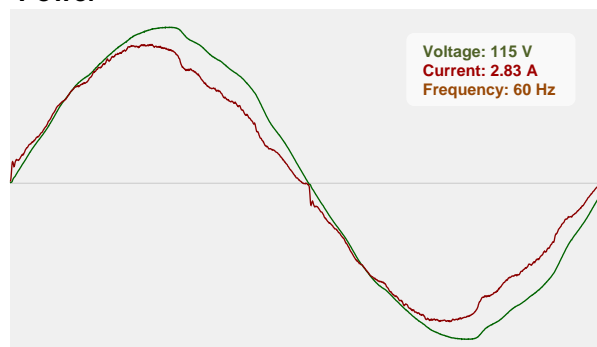


CIE 1931
x: 0.326
y: 0.334

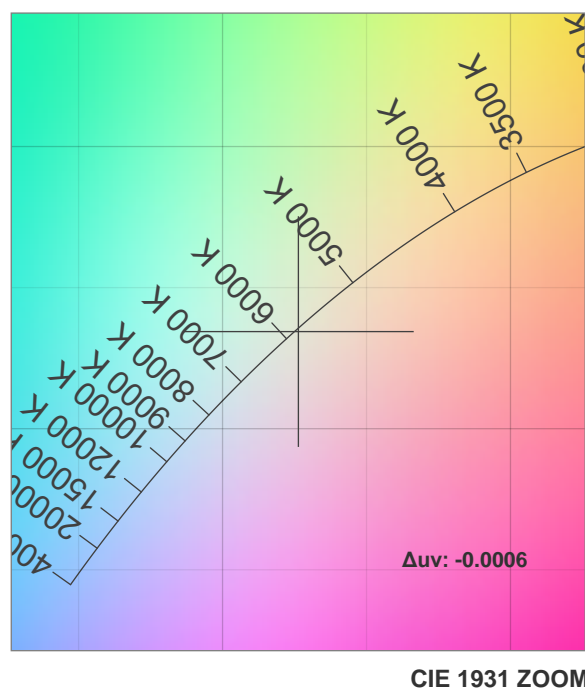
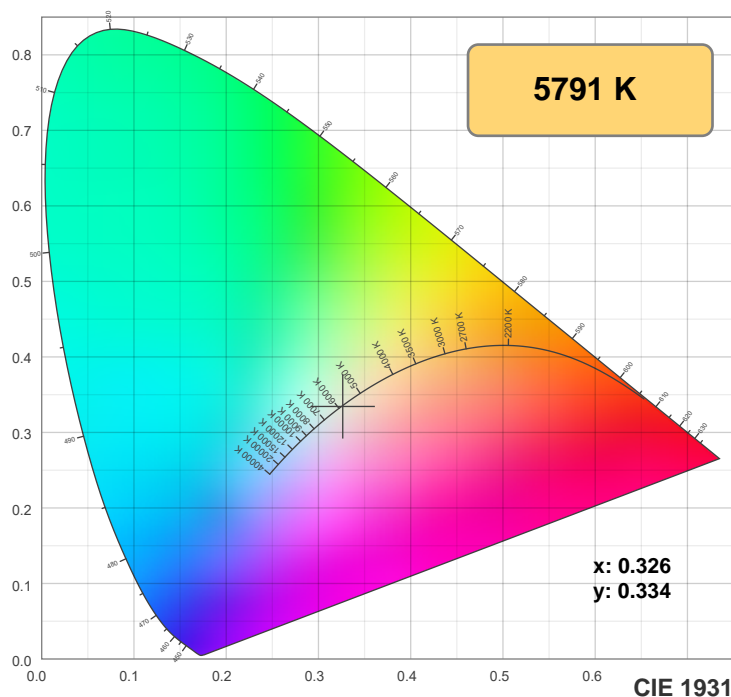
Spectra



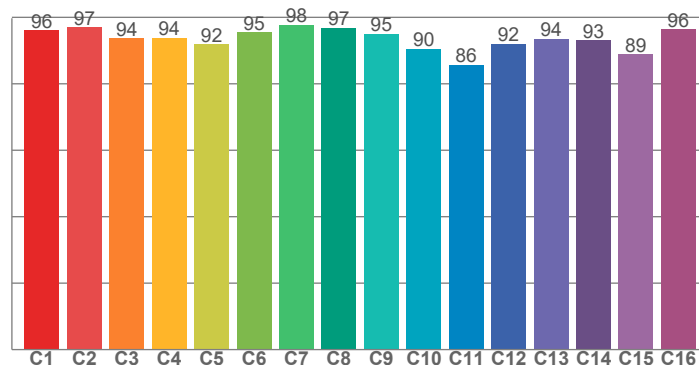
Power



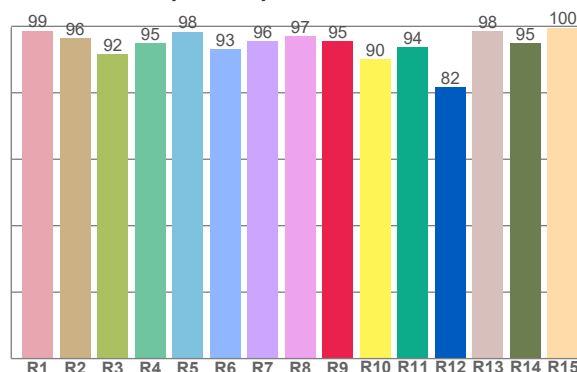
Color details



TM-30: 93.4



CRI: 95.7 (R1-R8)



CRI R values, only R1-R8 are used to calculate final CRI value

R1	R2	R3	R4	R5	R6	R7	R8	R9	R10	R11	R12	R13	R14	R15
98.7	96.4	91.7	94.9	98.4	93.2	95.5	97.0	95.5	90.0	93.8	81.8	98.4	95.0	99.6

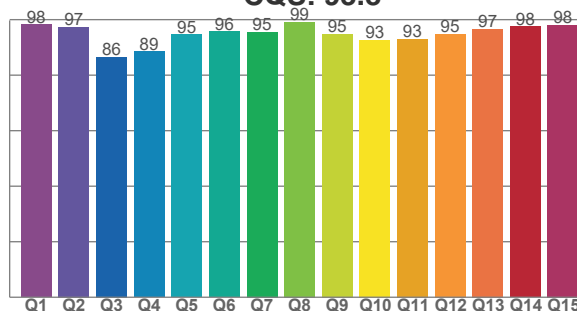
TM30 C values, 16 binned values out of total of 99 C values

C1	C2	C3	C4	C5	C6	C7	C8	C9	C10	C11	C12	C13	C14	C15	C16
96.0	97.0	93.6	93.8	91.9	95.5	97.8	96.9	95.0	90.5	85.7	92.0	93.5	93.0	88.8	96.5

CQS Q values

Q1	Q2	Q3	Q4	Q5	Q6	Q7	Q8	Q9	Q10	Q11	Q12	Q13	Q14	Q15
98.3	97.3	86.5	88.5	94.7	95.7	95.5	99.1	94.8	92.6	93.1	94.8	96.7	97.6	98.1

CQS: 93.8



Color parameters

Color temperature	Color rendering index	Red component	Color fidelity	Color gamut	Color quality scale	Color coordinate cie 1931	Color coordinate cie 1931	Color coordinate	Color coordinate	Color deviation from black body
CCT	CRI	CRI R9	TM30 Rf	TM30 Rg	CQS	x	y	u	v	Δuv
5791 K	95.7	95.5	93.4	102.6	93.8	0.326	0.334	0.205	0.315	-0.0006

TM-30 details

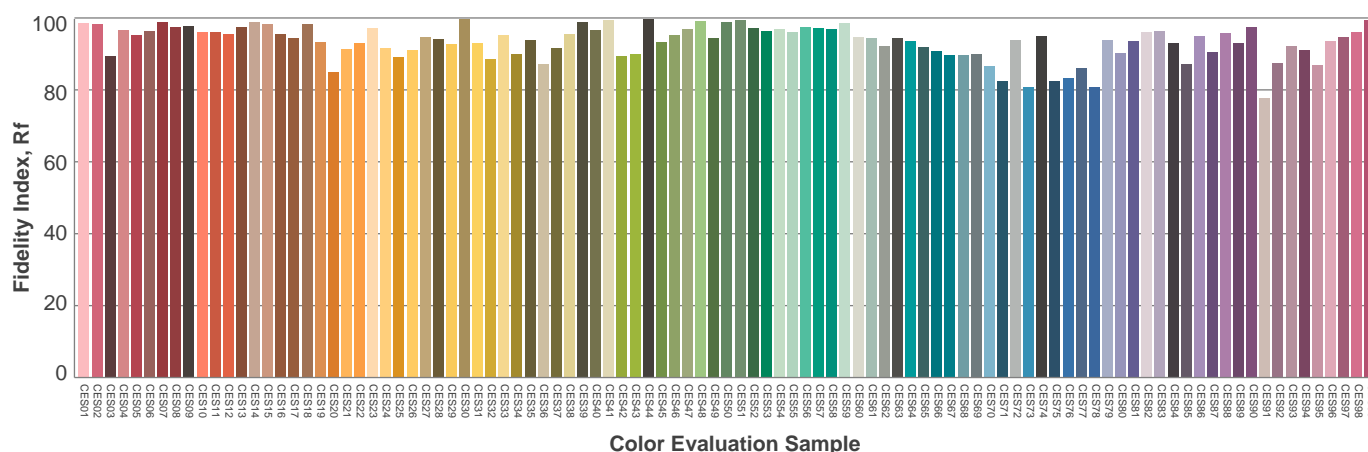
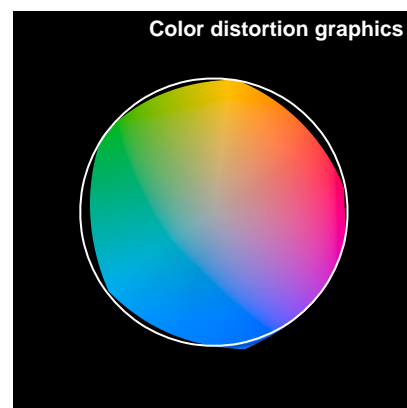
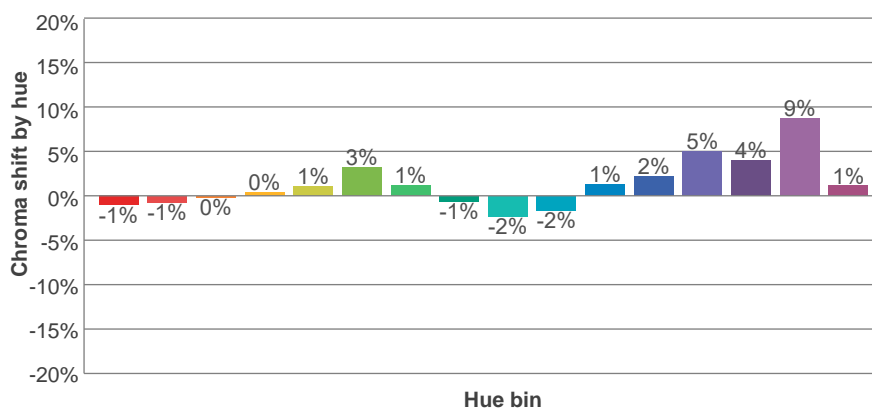
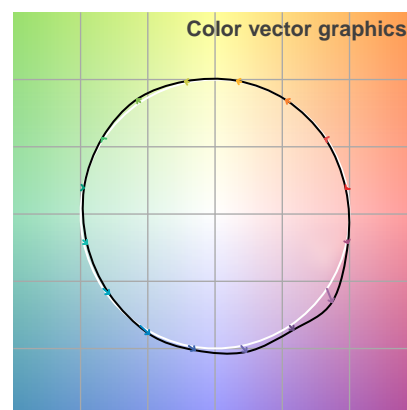
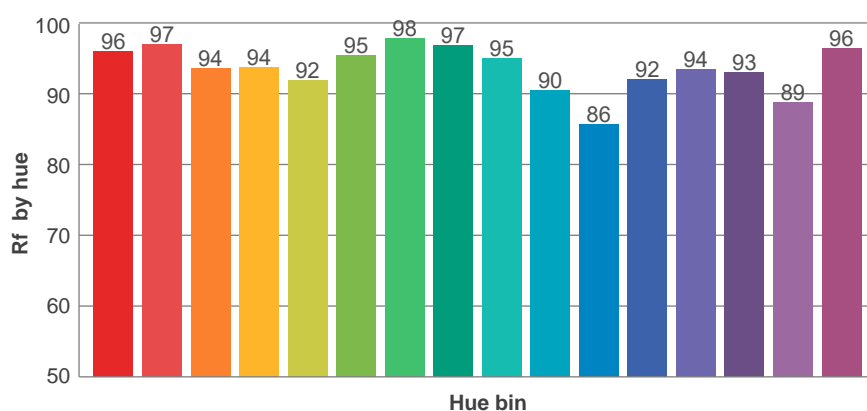
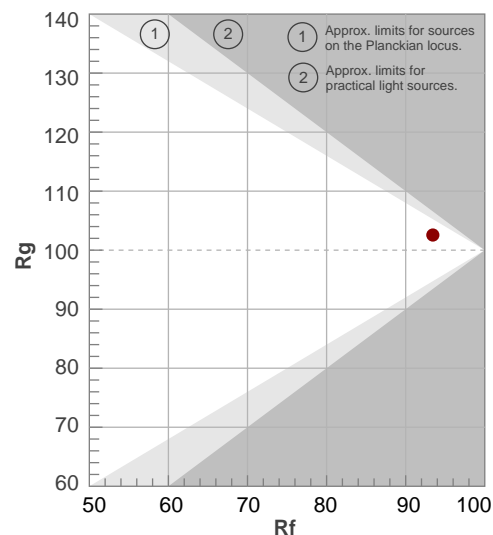
Rf 93.4

Fidelity index Rf

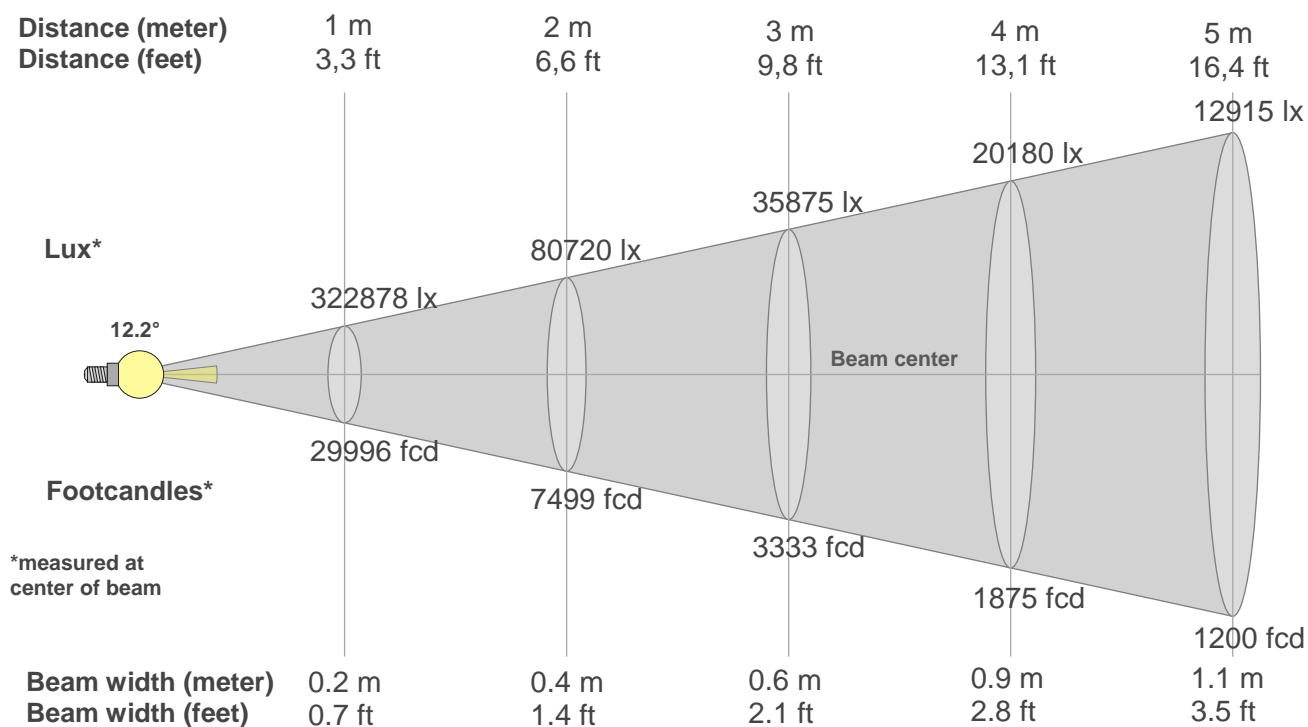
Rg 102.6

Gamut index Rg

Hue Bin	R _i	Shifts (%)	
		Chroma	Hue
1	96	-1%	-1%
2	97	-1%	1%
3	94	0%	3%
4	94	0%	3%
5	92	1%	3%
6	95	3%	1%
7	98	1%	-1%
8	97	-1%	0%
9	95	-2%	3%
10	90	-2%	6%
11	86	1%	9%
12	92	2%	5%
13	94	5%	3%
14	93	4%	1%
15	89	9%	-6%
16	96	1%	-2%



Beam details



Beam intensities from 1-20m

1m	2m	3m	4m	5m	6m	7m	8m	9m	10m	11m	12m	13m	14m	15m	16m	17m	18m	19m	20m
3.3ft	6.6ft	9.8ft	13.1ft	16.4ft	19.7ft	23ft	26.2ft	29.5ft	32.8ft	36.1ft	39.4ft	42.7ft	45.9ft	49.2ft	52.5ft	55.8ft	59.1ft	62.3ft	65.6ft
322878lx	80720lx	35875lx	20180lx	12915lx	8969lx	6589lx	5045lx	3986lx	3229lx	2668lx	2242lx	1911lx	1647lx	1435lx	1261lx	1117lx	997lx	894lx	807lx
29996.4 fcd	7499.1 fcd	3332.9 fcd	1874.8 fcd	1199.9 fcd	833.2 fcd	612.2 fcd	468.7 fcd	370.3 fcd	300 fcd	247.9 fcd	208.3 fcd	177.5 fcd	153 fcd	133.3 fcd	117.2 fcd	103.8 fcd	92.6 fcd	83.1 fcd	75 fcd

Intensities in 0° c-plane

0°	1°	2°	3°	4°	5°	6°	7°	8°	9°	10°	11°	12°	13°	14°	15°	16°	17°	18°	19°
323k	320k	310k	292k	262k	221k	168k	111k	61k	27k	11k	4k	2k	1k	1k	1k	1k	1k	1k	1k
100%	99%	96%	90%	81%	68%	52%	34%	19%	8%	3%	1%	1%	0%	0%	0%	0%	0%	0%	0%

Intensities in 90° c-plane

0°	1°	2°	3°	4°	5°	6°	7°	8°	9°	10°	11°	12°	13°	14°	15°	16°	17°	18°	19°
323k	320k	310k	292k	262k	221k	168k	111k	61k	27k	11k	4k	2k	1k	1k	1k	1k	1k	1k	1k
100%	99%	96%	90%	81%	68%	52%	34%	19%	8%	3%	1%	1%	0%	0%	0%	0%	0%	0%	0%

Intensities in 180° c-plane

0°	1°	2°	3°	4°	5°	6°	7°	8°	9°	10°	11°	12°	13°	14°	15°	16°	17°	18°	19°
323k	320k	310k	292k	262k	221k	168k	111k	61k	27k	11k	4k	2k	1k	1k	1k	1k	1k	1k	1k
100%	99%	96%	90%	81%	68%	52%	34%	19%	8%	3%	1%	1%	0%	0%	0%	0%	0%	0%	0%

Intensities in 270° c-plane

0°	1°	2°	3°	4°	5°	6°	7°	8°	9°	10°	11°	12°	13°	14°	15°	16°	17°	18°	19°
323k	320k	310k	292k	262k	221k	168k	111k	61k	27k	11k	4k	2k	1k	1k	1k	1k	1k	1k	1k
100%	99%	96%	90%	81%	68%	52%	34%	19%	8%	3%	1%	1%	0%	0%	0%	0%	0%	0%	0%

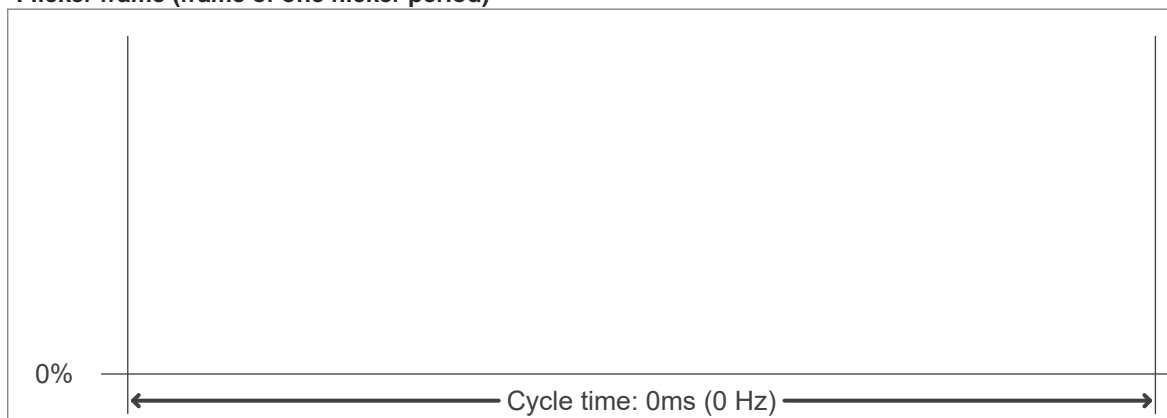
Beam angle 50%	Field angle 10%	Cutoff angle 2,5%	Intensity ratio in 120° cone	Intensity ratio in 90° cone
12.2°	17.6°	20.6°	77.6%	74.1%

Flicker

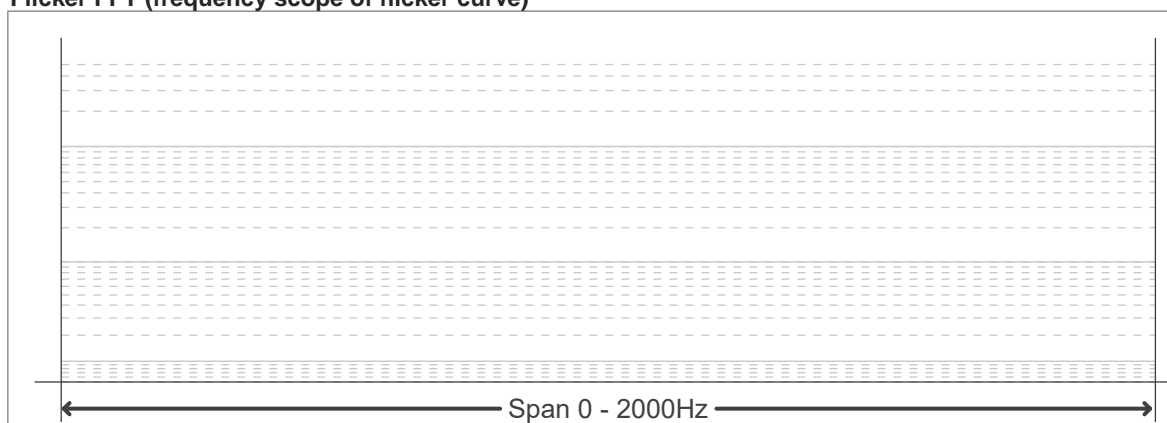
Flicker curve (complete sampled flicker signal)



Flicker frame (frame of one flicker period)



Flicker FFT (frequency scope of flicker curve)



Flicker results:

Flicker frequency:		n/a Hz	
Flicker index:	n/a	JA8/10 40Hz	n/a %
Flicker percentage:	n/a %	JA8/10 90Hz	n/a %
SVM: (Visual flicker)	n/a	JA8/10 200Hz	n/a %
PstLM	n/a	JA8/10 400Hz	n/a %
Mp	n/a	JA8/10 1000Hz	n/a %

Flicker conditions:

Sample rate:	n/a samples/second
--------------	--------------------